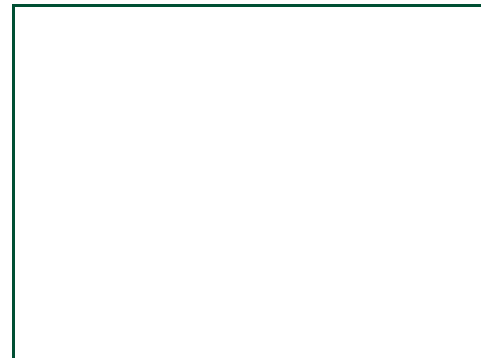
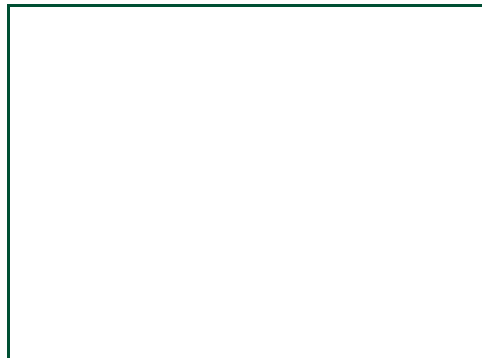
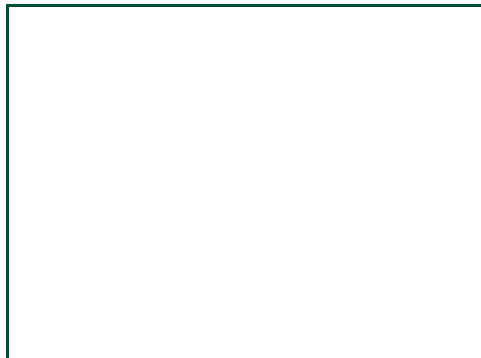
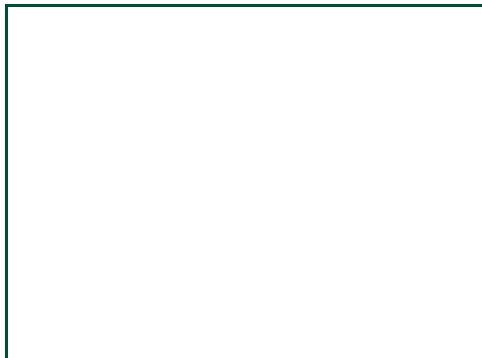




Burwood Road

Abington, Northampton

oriordanbond
SALES & LETTINGS



Burwood Road

Abington

NN3 2LS

PRICE £300,000

O'Riordan Bond is pleased to offer to the market this 1930's three bedroom semi-detached family home situated within this popular area. This home is within close proximity of schools, shops and local amenities as well as good transport links.

The accommodation comprises entrance hall, cloakroom/WC, sitting room with bay fronted window, dining room and kitchen/breakfast room. To the first floor are three bedrooms and a family bathroom. Outside is a front garden laid to lawn with hedgerow border and driveway providing off road parking leading to a single garage. The rear garden is mainly laid to lawn with paved patio and timber retaining fence. Further benefits include uPVC double glazing and gas radiator heating. (C/1005/M)

Additional information

- Council Tax Band: C
- Energy Efficiency Rating: E

Viewing

Viewing strictly by appointment – details below

Disclaimer

O'Riordan Bond Estate Agents Limited has not tested apparatus, equipment, fittings or services and so cannot verify they are in working order. The buyer is advised to obtain verification from their solicitor or surveyor.

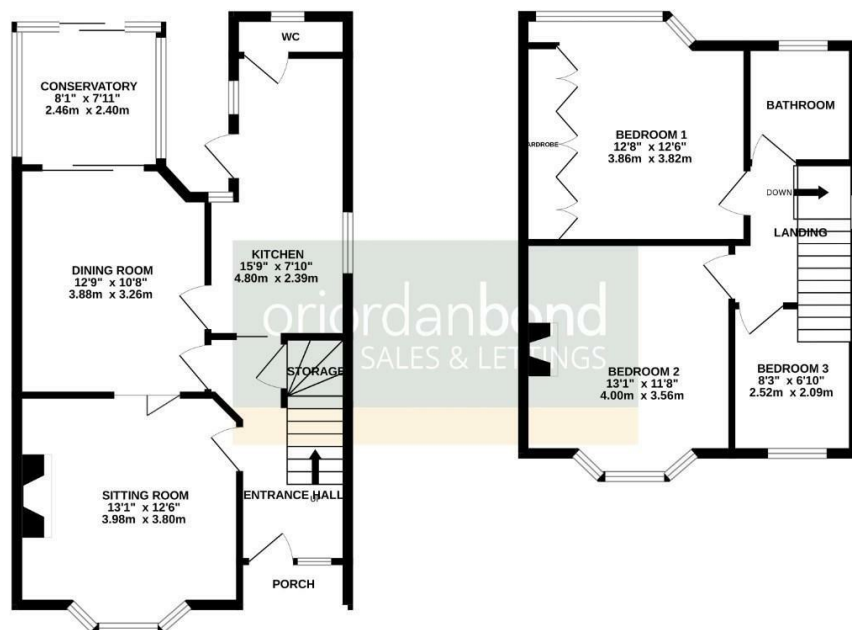
O'Riordan Bond Abington East Sales
01604 639007

abingtoneast@oriordanbond.co.uk



GROUND FLOOR
565 sq.ft. (52.5 sq.m.) approx.

1ST FLOOR
440 sq.ft. (40.8 sq.m.) approx.



TOTAL FLOOR AREA: 1005 sq.ft. (93.3 sq.m.) approx.

Whilst every attempt has been made to ensure the accuracy of the floorplan contained herein, measurements of doors, windows, rooms and any other items are approximate and no responsibility is taken for any error, omission or mis-statement. This plan is for illustrative purposes only and should be used as such by any prospective purchaser. The services, systems and appliances shown have not been tested and no guarantee as to their condition or efficiency can be given.
Made with Metrepage 6/2025